

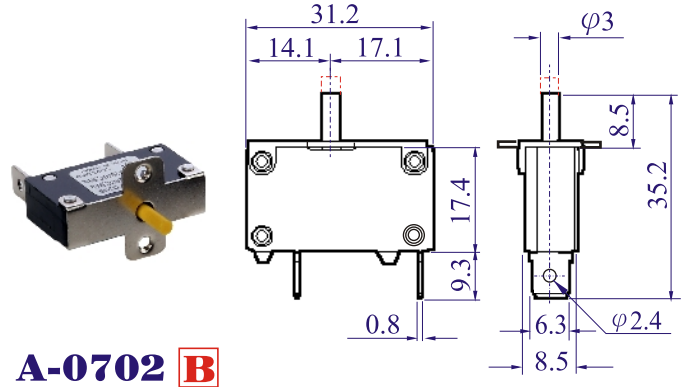
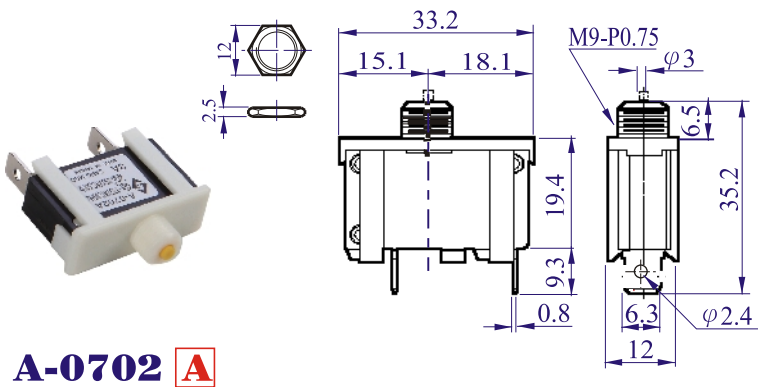


SERIES A-0702

Circuit Breaker | Overload Protector | No-Fuse Breaker

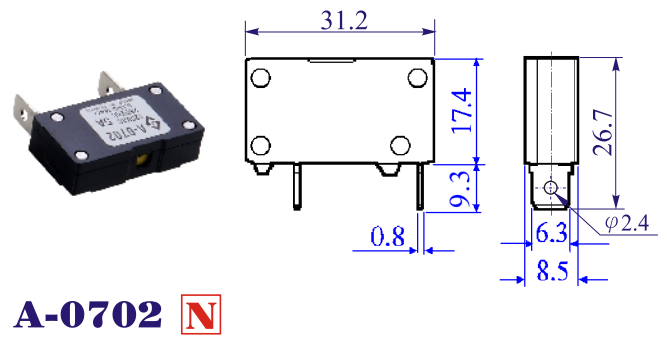
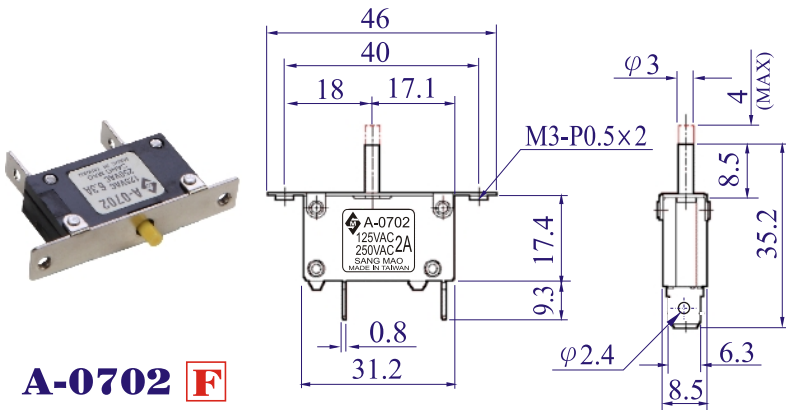
Sang Mao

DIMENSION IN mm



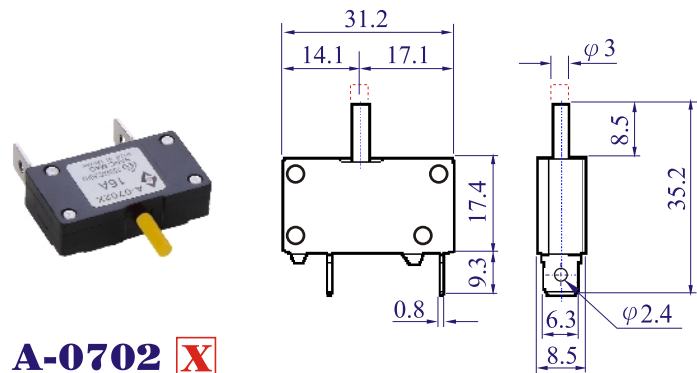
A-0702 A

A-0702 B



A-0702 F

A-0702 N



A-0702 X

Order Part No. A-0702 - -
 Bushing Ampere Rating * ** ***

* Reset Button Color : B= Black , W= White , Y= Yellow , R= Red .
 ** Option Terminal Type : P= Plate , L= 90° Bend .
 *** 200% Load Trip Delay Time : F= Fast (4"-10") , M= Middle (6"-18") , S= Slow (8"-60")

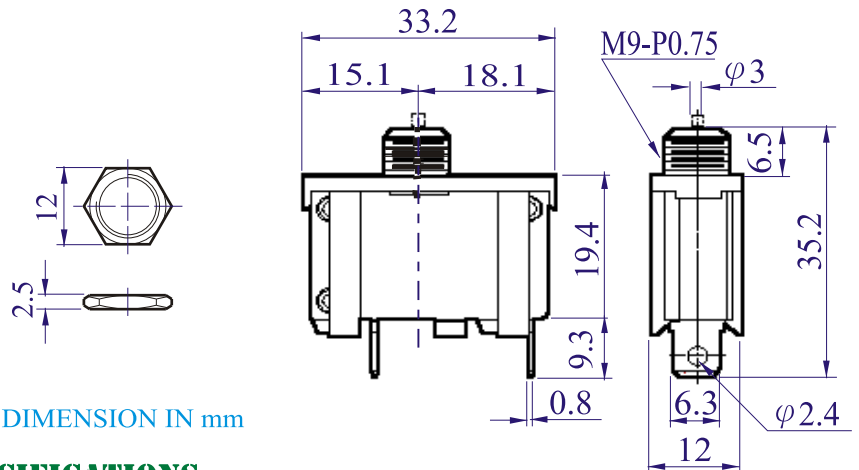




SERIES A-0702A

Circuit Breaker | Overload Protector | No-Fuse Breaker

Sang Mao



DIMENSION IN mm

SPECIFICATIONS:

DERATING FACTOR		
TEMP	1A ~ 10A	11A ~ 20A
60°C	--	× 0.50
55°C	--	× 0.55
50°C	× 0.50	× 0.65
45°C	× 0.55	× 0.70
40°C	× 0.68	× 0.80
35°C	× 0.80	× 0.85
30°C	× 0.86	× 0.88
25°C	× 1.00	× 1.00
20°C	× 1.11	× 1.10
15°C	× 1.20	× 1.20
10°C	× 1.35	× 1.30

(FOR REFERENCE ONLY)

MAX. INTERNAL RESISTANCE	
1.0A- 1.5A	0.500 Ω
2.0A- 2.5A	0.320 Ω
3.0A- 4.0A	0.100 Ω
5.0A- 6.0A	0.050 Ω
7.0A- 9.0A	0.020 Ω
10.0A-12.0A	0.016 Ω
13.0A-16.0A	0.012 Ω
17.0A-20.0A	0.012 Ω

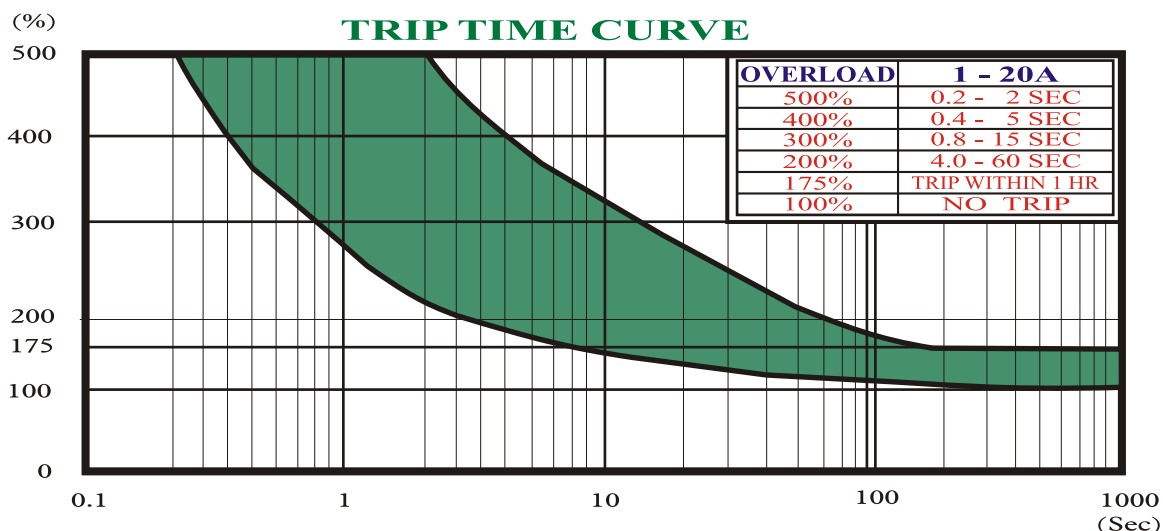
- * STANDARD RATING: **1-20** AMPERE.
- * INPUT POWER: **12** VDC / **125** VAC / **250** VAC
- * DIELECTRIC STRENGTH: **1500** VAC / 1 MINUTE
- * RATED CONDITIONAL SHORT-CIRCUIT CURRENT : **IEC-934**
" **PC.1 1000A** "WITH " **FUSE 16 A gL/gG** "
- * INSULATION RESISTANCE : **> 100 MΩ**
- * CALIBRATION :
25°C - **100%** OF RATED CURRENT - CONTINUOUSLY CARRIED.
25°C - BETWEEN **101% TO 170%** - MAY TRIP OR NOT.
25°C - **175%** OF RATED CURRENT - TRIP **WITHIN 1 HOUR**.
25°C - **200%** OF RATED CURRENT - TRIP **WITHIN 1 MINUTE**
- * CONTACT ENDURANCE: **125VAC** × **150%** OF RATED CURRENT -
500 CYCLES.
- * **IEC - 934** METHOD OF OPERATION : " **R** " = **AUTOMATIC INTER-
RUPTION AND NON-AUTOMATIC (MANUAL) RESETTING .**
- * **IEC - 934** METHOD OF TRIPPING : " **TO** " = **THERMAL .**
- * DEGREE OF TRIP - FREE BEHAVIOUR : " **CYCLING TRIP - FREE** "
- * RESET: MANUAL PUSH RESET

APPROVALS :

- CSA** APPROVAL: **2 - 15A** 125VAC ,60Hz TC2,OL0,SC:C1,1kA,125VAC
- VDE** APPROVAL: **2 - 16A** 250VAC
- CSA c/us** APPROVAL: **2 - 15A** 125VAC / 60Hz

APPLICATIONS:

- * TABLE SAW
- * GENERATOR
- * BATTERY CHARGER
- * SCREW DRIVER





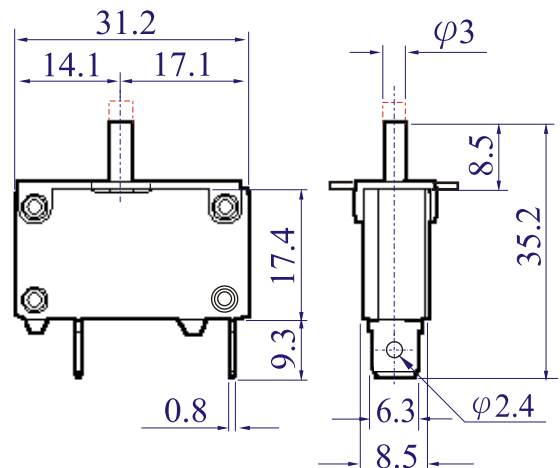
SERIES A-0702B

Circuit Breaker | Overload Protector | No-Fuse Breaker

Sang Mao



DIMENSION IN mm



SPECIFICATIONS:

DERATING FACTOR		
TEMP	1A ~ 10A	11A ~ 20A
60°C	--	x 0.50
55°C	--	x 0.55
50°C	x 0.50	x 0.65
45°C	x 0.55	x 0.70
40°C	x 0.68	x 0.80
35°C	x 0.80	x 0.85
30°C	x 0.86	x 0.88
25°C	x 1.00	x 1.00
20°C	x 1.11	x 1.10
15°C	x 1.20	x 1.20
10°C	x 1.35	x 1.30

(FOR REFERENCE ONLY)

MAX. INTERNAL RESISTANCE	
1.0A- 1.5A	0.500 Ω
2.0A- 2.5A	0.320 Ω
3.0A- 4.0A	0.100 Ω
5.0A- 6.0A	0.050 Ω
7.0A- 9.0A	0.020 Ω
10.0A-12.0A	0.016 Ω
13.0A-16.0A	0.012 Ω
17.0A-20.0A	0.012 Ω

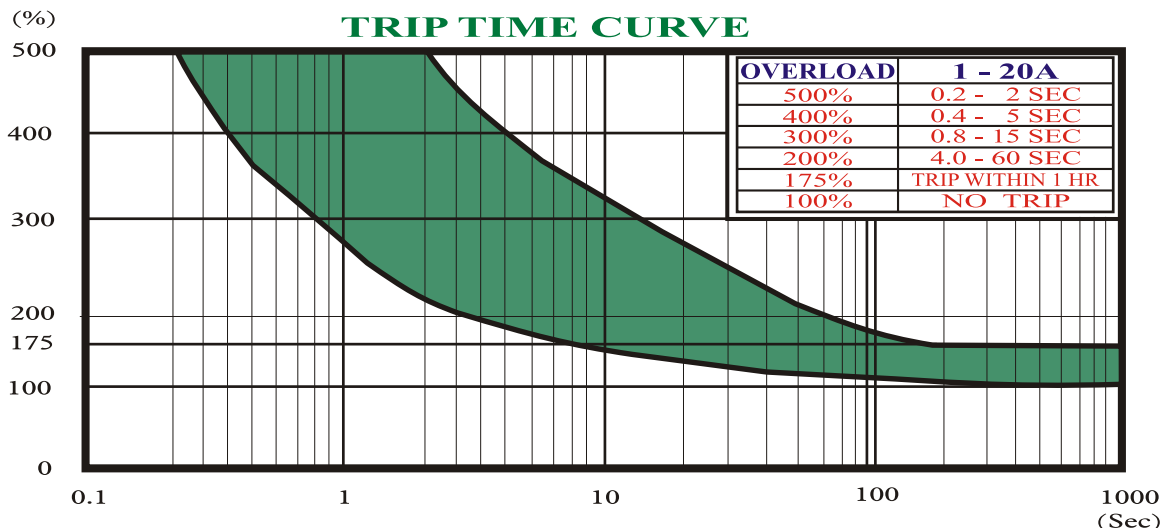
- * STANDARD RATING: **1-20** AMPERE.
- * INPUT POWER: **12 VDC / 125 VAC / 250 VAC**
- * DIELECTRIC STRENGTH: **1500 VAC / 1 MINUTE**
- * RATED CONDITIONAL SHORT-CIRCUIT CURRENT : **IEC-934 "PC.1 1000A" WITH " FUSE 16 A gL/gG "**
- * INSULATION RESISTANCE : **> 100 MΩ**
- * CALIBRATION :
 - 25°C - **100%** OF RATED CURRENT - CONTINUOUSLY CARRIED.
 - 25°C - BETWEEN **101% TO 170%** - MAY TRIP OR NOT.
 - 25°C - **175%** OF RATED CURRENT - TRIP **WITHIN 1 HOUR.**
 - 25°C - **200%** OF RATED CURRENT - TRIP **WITHIN 1 MINUTE**
- * CONTACT ENDURANCE: **125VAC x 150%** OF RATED CURRENT - **500 CYCLES.**
- * **IEC - 934** METHOD OF OPERATION : " **R** " = **AUTOMATIC INTER- RUPTION AND NON-AUTOMATIC (MANUAL) RESETTING .**
- * **IEC - 934** METHOD OF TRIPPING : " **TO** " = **THERMAL .**
- * DEGREE OF TRIP - FREE BEHAVIOUR : " **CYCLING TRIP - FREE** "
- * RESET: MANUAL PUSH RESET

APPROVALS :

- CSA** APPROVAL: **2 - 15A** 125VAC ,60Hz TC2,OL0,SC:C1,1kA,125VAC
- VDE** APPROVAL: **2 - 16A** 250VAC
- CSA c/us** APPROVAL: **2 - 15A** 125VAC / 60Hz

APPLICATIONS:

- * TABLE SAW
- * GENERATOR
- * BATTERY CHARGER
- * SCREW DRIVER

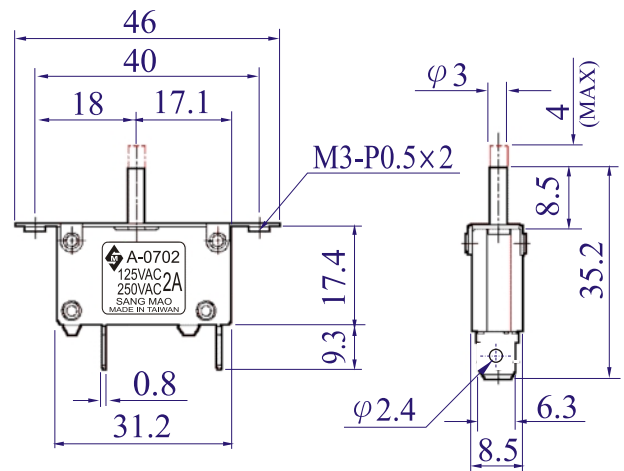
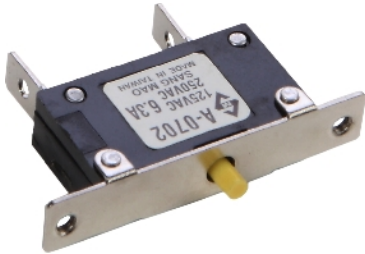




SERIES A-0702F

Circuit Breaker | Overload Protector | No-Fuse Breaker

Sang Mao



DIMENSION IN mm

SPECIFICATIONS:

DERATING FACTOR		
TEMP	1A ~ 10A	11A ~ 20A
60°C	--	× 0.50
55°C	--	× 0.55
50°C	× 0.50	× 0.65
45°C	× 0.55	× 0.70
40°C	× 0.68	× 0.80
35°C	× 0.80	× 0.85
30°C	× 0.86	× 0.88
25°C	× 1.00	× 1.00
20°C	× 1.11	× 1.10
15°C	× 1.20	× 1.20
10°C	× 1.35	× 1.30

(FOR REFERENCE ONLY)

MAX. INTERNAL RESISTANCE	
1.0A- 1.5A	0.500 Ω
2.0A- 2.5A	0.320 Ω
3.0A- 4.0A	0.100 Ω
5.0A- 6.0A	0.050 Ω
7.0A- 9.0A	0.020 Ω
10.0A-12.0A	0.016 Ω
13.0A-16.0A	0.012 Ω
17.0A-20.0A	0.012 Ω

- ⊛ STANDARD RATING: **1-20** AMPERE.
- ⊛ INPUT POWER: **12 VDC / 125 VAC / 250 VAC**
- ⊛ DIELECTRIC STRENGTH: **1500 VAC / 1 MINUTE**
- ⊛ RATED CONDITIONAL SHORT-CIRCUIT CURRENT : **IEC-934 "PC.1 1000A" WITH " FUSE 16 A gL/gG "**
- ⊛ INSULATION RESISTANCE : **> 100 MΩ**
- ⊛ CALIBRATION :
 - 25°C -**100%** OF RATED CURRENT - CONTINUOUSLY CARRIED.
 - 25°C - BETWEEN **101% TO 170%** - MAY TRIP OR NOT.
 - 25°C -**175%** OF RATED CURRENT - TRIP **WITHIN 1 HOUR.**
 - 25°C -**200%** OF RATED CURRENT - TRIP **WITHIN 1 MINUTE**
- ⊛ CONTACT ENDURANCE: **125VAC × 150%** OF RATED CURRENT - **500 CYCLES.**
- ⊛ **IEC - 934** METHOD OF OPERATION : " **R** " = **AUTOMATIC INTER- RUPTION AND NON-AUTOMATIC (MANUAL) RESETTING .**
- ⊛ **IEC - 934** METHOD OF TRIPPING : " **TO** " = **THERMAL .**
- ⊛ DEGREE OF TRIP - FREE BEHAVIOUR : " **CYCLING TRIP - FREE** "
- ⊛ RESET: MANUAL PUSH RESET

APPROVALS :

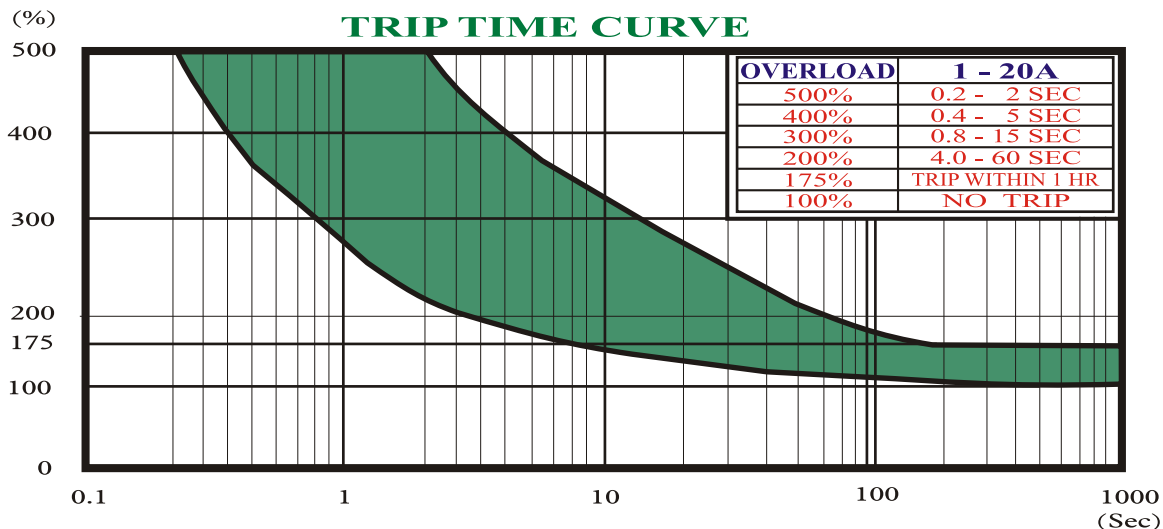
CSA APPROVAL: **2 - 15A** 125VAC ,60Hz TC2,OL0,SC:C1,1kA,125VAC

VDE APPROVAL: **2 - 16A** 250VAC

CSA c/us APPROVAL: **2 - 15A** 125VAC / 60Hz

APPLICATIONS:

- ⊛ TABLE SAW
- ⊛ GENERATOR
- ⊛ BATTERY CHARGER
- ⊛ SCREW DRIVER

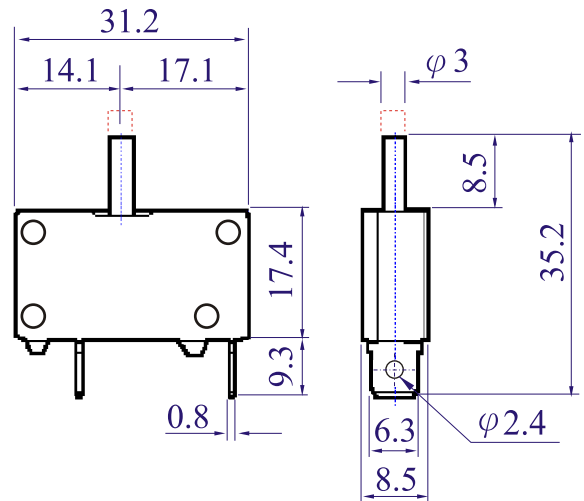




SERIES A-0702X

Circuit Breaker | Overload Protector | No-Fuse Breaker

Sang Mao



DIMENSION IN mm

SPECIFICATIONS:

DERATING FACTOR		
TEMP	1A ~ 10A	11A ~ 20A
60°C	--	x 0.50
55°C	--	x 0.55
50°C	x 0.50	x 0.65
45°C	x 0.55	x 0.70
40°C	x 0.68	x 0.80
35°C	x 0.80	x 0.85
30°C	x 0.86	x 0.88
25°C	x 1.00	x 1.00
20°C	x 1.11	x 1.10
15°C	x 1.20	x 1.20
10°C	x 1.35	x 1.30

(FOR REFERENCE ONLY)

MAX. INTERNAL RESISTANCE	
1.0A- 1.5A	0.500 Ω
2.0A- 2.5A	0.320 Ω
3.0A- 4.0A	0.100 Ω
5.0A- 6.0A	0.050 Ω
7.0A- 9.0A	0.020 Ω
10.0A-12.0A	0.016 Ω
13.0A-16.0A	0.012 Ω
17.0A-20.0A	0.012 Ω

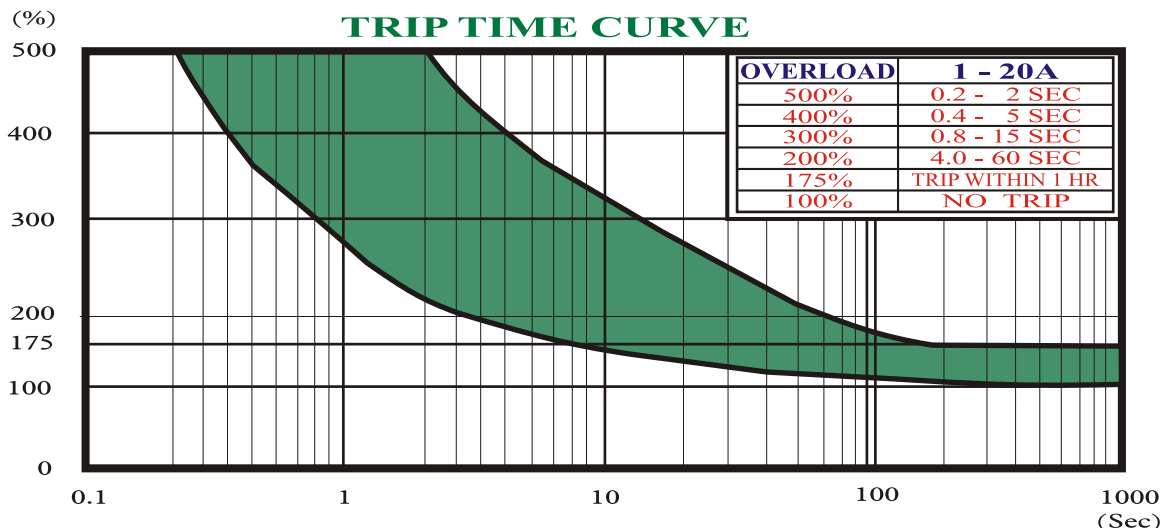
- * STANDARD RATING: **1-20** AMPERE.
- * INPUT POWER: **12 VDC / 125 VAC / 250 VAC**
- * DIELECTRIC STRENGTH: **1500 VAC / 1 MINUTE**
- * RATED CONDITIONAL SHORT-CIRCUIT CURRENT : **IEC-934 "PC.1 1000A" WITH " FUSE 16 A gL/gG "**
- * INSULATION RESISTANCE : **> 100 MΩ**
- * CALIBRATION :
 - 25°C - **100%** OF RATED CURRENT - CONTINUOUSLY CARRIED.
 - 25°C - BETWEEN **101% TO 170%** - MAY TRIP OR NOT.
 - 25°C - **175%** OF RATED CURRENT - TRIP **WITHIN 1 HOUR.**
 - 25°C - **200%** OF RATED CURRENT - TRIP **WITHIN 1 MINUTE**
- * CONTACT ENDURANCE: **125VAC x 150%** OF RATED CURRENT - **500 CYCLES.**
- * **IEC - 934** METHOD OF OPERATION : " **R** " = **AUTOMATIC INTERRUPTION AND NON-AUTOMATIC (MANUAL) RESETTING .**
- * **IEC - 934** METHOD OF TRIPPING : " **TO** " = **THERMAL .**
- * DEGREE OF TRIP - FREE BEHAVIOUR : " **CYCLING TRIP - FREE** "
- * RESET: MANUAL PUSH RESET

APPROVALS :

- CSA** APPROVAL: **2 - 15A** 125VAC ,60Hz TC2,OL0,SC:C1,1kA,125VAC
- VDE** APPROVAL: **2 - 16A** 250VAC
- CSA c/us** APPROVAL: **2 - 15A** 125VAC / 60Hz

APPLICATIONS:

- * TABLE SAW
- * GENERATOR
- * BATTERY CHARGER
- * SCREW DRIVER





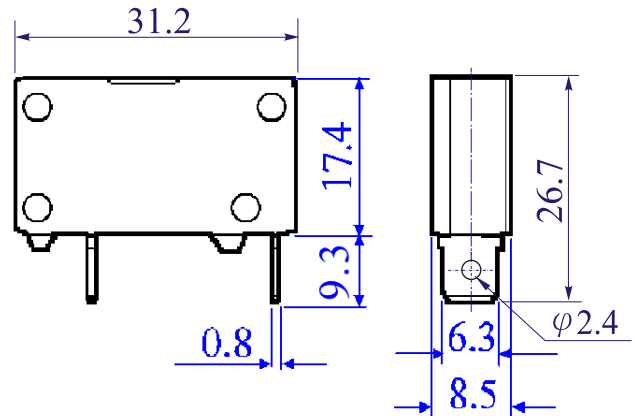
SERIES A-0702N

Circuit Breaker | Overload Protector | No-Fuse Breaker

Sang Mao



DIMENSION IN mm



DERATING FACTOR	
TEMP	1A ~ 10A
60°C	--
55°C	--
50°C	× 0.50
45°C	× 0.55
40°C	× 0.68
35°C	× 0.80
30°C	× 0.86
25°C	× 1.00
20°C	× 1.11
15°C	× 1.20
10°C	× 1.35

(FOR REFERENCE ONLY)

MAX. INTERNAL RESISTANCE	
1.0A- 1.5A	0.500 Ω
2.0A- 2.5A	0.320 Ω
3.0A- 4.0A	0.100 Ω
5.0A- 6.0A	0.050 Ω
7.0A- 9.0A	0.020 Ω
10.0A	0.016 Ω

SPECIFICATIONS:

- ⊛ STANDARD RATING: **1-10** AMPERE.
- ⊛ INPUT POWER: **12 VDC / 125 VAC / 250 VAC**
- ⊛ DIELECTRIC STRENGTH: **1500 VAC / 1 MINUTE**
- ⊛ RATED CONDITIONAL SHORT-CIRCUIT CURRENT : **IEC-934 "PC.1 1000A" WITH " FUSE 16 A gL/gG "**
- ⊛ INSULATION RESISTANCE : **> 100 MΩ**
- ⊛ CALIBRATION :
 - 25°C - **100%** OF RATED CURRENT - CONTINUOUSLY CARRIED.
 - 25°C - BETWEEN **101% TO 170%** - MAY TRIP OR NOT.
 - 25°C - **175%** OF RATED CURRENT - TRIP **WITHIN 1 HOUR.**
 - 25°C - **200%** OF RATED CURRENT - TRIP **WITHIN 1 MINUTE**
- ⊛ CONTACT ENDURANCE: **125VAC × 150%** OF RATED CURRENT - **500 CYCLES.**
- ⊛ **IEC - 934** METHOD OF OPERATION : " **R** " = **AUTOMATIC INTERRUPTION AND NON-AUTOMATIC (MANUAL) RESETTING .**
- ⊛ **IEC - 934** METHOD OF TRIPPING : " **TO** " = **THERMAL .**
- ⊛ DEGREE OF TRIP - FREE BEHAVIOUR : " **CYCLING TRIP - FREE** "
- ⊛ RESET: AUTO RESET

APPLICATIONS:

- ⊛ SEWING MOTOR
- ⊛ BATTERY CHARGER
- ⊛ SCREW DRIVER

